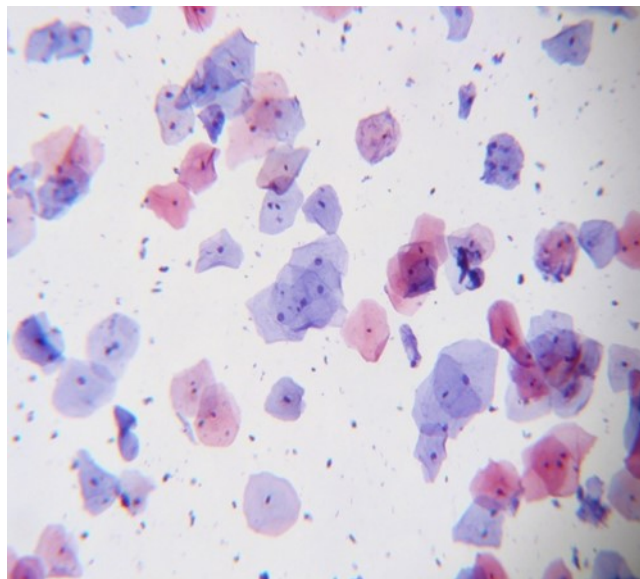




LGM INTERNATIONAL, INC.

2017 CATALOG





2017 LGM INTERNATIONAL CATALOG

Liqui-PREP™ Cytology Processing Products & Accessories

Liqui-PREP™ Cytology Products & Accessories are for General Cytology Processing. The products listed below are configured for specific uses.

Liqui-PREP™ 30-Series Cytology Processing Kits

Liqui-PREP™ 30-Series of products include Liqui-PREP™ Preservative Solution in Vials and Bulk Bottles and Liqui-PREP™ Cellular Base Solution. Some products include 15ml Plastic Centrifuge tubes.



Suggested Specimens:

- * Fine Needle Aspirates
- * Cervical Specimens
- * Buccal Specimens
- * Anal Specimens

PRODUCT NUMBER	DESCRIPTION
30-050	<p>Liqui-PREP™ Cytology Processing Kit ~ 50 Processes</p> <p>Liqui-PREP™ Cytology Processing Kit ~ 50 Processes</p> <p>If using the "Working Tube" Encapsulation method or Auto-LP™, there is enough Liqui-PREP™ Cellular Base to perform ~95 processes.</p> <p>Configuration:</p> <ul style="list-style-type: none"> • 2 25 Liqui-PREP™ Preservative Vial Trays (10ml Fill) • 1 Liqui-PREP™ Cellular Base Solution (38ml Fill) • 1 Box of 100 Plastic 15ml Centrifuge Tubes <p>Shipping Information:</p> <ul style="list-style-type: none"> • Kit Dimension: 14" X 8" X 4" (35.6cm X 20.3cm X 10.2cm) • ~ Kit Weight: 4lbs (1.8Kg) <p>Suggested Use:</p> <p>General Cytology Specimen Processing: Small volume specimens collected with or without collection devices.</p>



Suggested Specimens:

- * Fine Needle Aspirates
- * Cervical Specimens
- * Buccal Specimens
- * Anal Specimens

PRODUCT NUMBER	DESCRIPTION
30-1001	<p>Liqui-PREP™ Cytology Processing Kit ~ 100 Processes</p> <p>If using the "Working Tube" Encapsulation method or Auto-LP™, there is enough Liqui-PREP™ Cellular Base to perform ~190 processes.</p> <p>Configuration:</p> <ul style="list-style-type: none"> • 4 25 Liqui-PREP™ Preservative Vial Trays (10ml Fill) • 2 Liqui-PREP™ Cellular Base Solution (38ml Fill) <p>Shipping Information:</p> <ul style="list-style-type: none"> • Kit Dimension: 10" X 8" X 8" (25.4cm X 20.3cm X 20.3cm) • ~ Kit Weight: 5.6lbs (2.5Kg) <p>Suggested Use:</p> <p>General Cytology Specimen Processing: Small volume specimens collected with or without collection devices.</p>



2017 LGM INTERNATIONAL CATALOG

Liqui-PREP™ Cytology Processing Products & Accessories

Liqui-PREP™ 30-Series Cytology Processing Kits



Suggested Specimens:

- * Cervical Specimens
- * Buccal Specimens
- * Anal Specimens

PRODUCT NUMBER	DESCRIPTION
30-3001	<p>Liqui-PREP™ Cytology Processing Kit ~ 300 Processes</p> <p>If using the "Working Tube" Encapsulation method or Auto-LP™, there is enough Liqui-PREP™ Cellular Base to perform ~560 processes.</p> <p>Configuration:</p> <ul style="list-style-type: none"> • 12 25 Liqui-PREP™ Preservative Vial Trays (10ml Fill) • 1 Liqui-PREP™ Cellular Base Solution (225ml Fill) <p>Shipping Information:</p> <ul style="list-style-type: none"> • Kit Dimension: 18" X 16" X 6" (45.7cm X 40.6cm X 15.2cm) • ~ Kit Weight: 16lbs (7.3Kg) <p>Suggested Use:</p> <p>General Cytology Specimen Processing: Small volume specimens collected with or without collection devices.</p>



Suggested Specimens:

- * Cervical Specimens
- * Buccal Specimens
- * Anal Specimens

PRODUCT NUMBER	DESCRIPTION
30-3001A	<p>Liqui-PREP™ Cytology Processing Kit ~ 300 Processes</p> <p>If using the "Working Tube" Encapsulation method or Auto-LP™, there is enough Liqui-PREP™ Cellular Base to perform ~560 processes.</p> <p>Configuration:</p> <ul style="list-style-type: none"> • 12 25 Liqui-PREP™ Preservative Vial Trays (10ml Fill) • 3 Liqui-PREP™ Cellular Base Solution (75ml Fill) <p>Shipping Information:</p> <ul style="list-style-type: none"> • Kit Dimension: 18" X 16" X 6" (45.7cm X 40.6cm X 15.2cm) • ~ Kit Weight: 20.5lbs (9.3Kg) <p>Suggested Use:</p> <p>General Cytology Specimen Processing: Small volume specimens collected with or without collection devices.</p>



Suggested Specimens:

- * Cervical Specimens
- * Buccal Specimens
- * Anal Specimens

PRODUCT NUMBER	DESCRIPTION
30-3001B	<p>Liqui-PREP™ Cytology Processing Kit ~ 300 Processes (Auto-LP™)</p> <p>If using the "Working Tube" Encapsulation method or Auto-LP™, there is enough Liqui-PREP™ Cellular Base to perform ~935 processes.</p> <p>Configuration:</p> <ul style="list-style-type: none"> • 12 25 Liqui-PREP™ Preservative Vial Trays (10ml Fill) • 3 Liqui-PREP™ Cellular Base Solution (115ml Fill) <p>Shipping Information:</p> <ul style="list-style-type: none"> • Kit Dimension: 18" X 16" X 6" (45.7cm X 40.6cm X 15.2cm) • ~ Kit Weight: 20.5lbs (9.5Kg) <p>Suggested Use:</p> <p>General Cytology Specimen Processing: Small volume specimens collected with or without collection devices. Best use with Auto-LP™.</p>



2017 LGM INTERNATIONAL CATALOG

Liqui-PREP™ Cytology Processing Products & Accessories

Liqui-PREP™ 30-Series Cytology Processing Kits



Suggested Specimens:

- * Cervical Specimens
- * Buccal Specimens
- * Anal Specimens

PRODUCT NUMBER	DESCRIPTION
30-300	<p>Liqui-PREP™ Cytology Processing Kit ~ 300 Processes</p> <p>If using the "Working Tube" Encapsulation method or Auto-LP™, there is enough Liqui-PREP™ Cellular Base to perform ~560 processes.</p> <p>Configuration:</p> <ul style="list-style-type: none"> • 12 25 Liqui-PREP™ Preservative Vial Trays (10ml Fill) • 1 Liqui-PREP™ Cellular Base Solution (225ml Fill) • 3 Box of 100 Plastic 15ml Centrifuge Tubes <p>Shipping Information:</p> <ul style="list-style-type: none"> • Kit Dimension: 16" X 16" X 10" (40.6cm X 40.6cm X 25.4cm) • ~ Kit Weight: 21lbs (9.5Kg) <p>Suggested Use:</p> <p>General Cytology Specimen Processing: Small volume specimens collected with or without collection devices.</p>



Suggested Specimens:

- * Cervical Specimens
- * Buccal Specimens
- * Anal Specimens

PRODUCT NUMBER	DESCRIPTION
30-300A	<p>Liqui-PREP™ Cytology Processing Kit ~ 300 Processes</p> <p>If using the "Working Tube" Encapsulation method or Auto-LP™, there is enough Liqui-PREP™ Cellular Base to perform ~560 processes.</p> <p>Configuration:</p> <ul style="list-style-type: none"> • 12 25 Liqui-PREP™ Preservative Vial Trays (10ml Fill) • 3 Liqui-PREP™ Cellular Base Solution (75ml Fill) • 3 Box of 100 Plastic 15ml Centrifuge Tubes <p>Shipping Information:</p> <ul style="list-style-type: none"> • Kit Dimension: 16" X 16" X 10" (40.6cm X 40.6cm X 25.4cm) • ~ Kit Weight: 20.5lbs (9.3Kg) <p>Suggested Use:</p> <p>General Cytology Specimen Processing: Small volume specimens collected with or without collection devices.</p>



2017 LGM INTERNATIONAL CATALOG

Liqui-PREP™ Cytology Processing Products & Accessories

Liqui-PREP™ 30-Series Cytology Processing Kits



Suggested Specimens:

- * Sputum & Bronchial Washings
- * Urine
- * Pleural, Cardio, etc.
- * CFS, FNA

PRODUCT NUMBER	DESCRIPTION
30-050B	Liqui-PREP™ Cytology Processing Kit ~ 50 Processes Bulk Processing Kit. Actual processes per kit depend on the specimens being processed. Configuration: <ul style="list-style-type: none"> • 1 Bottle of Liqui-PREP™ Preservative Solution (990ml Fill) • 1 Liqui-PREP™ Cellular Base Solution (26ml Fill) • 1 Box of 100 Plastic 15ml Centrifuge Tubes Shipping Information: <ul style="list-style-type: none"> • Kit Dimension: 8" X 8" X 9" (20.3cm X 20.3cm X 22.9cm) • ~ Kit Weight: 3.5lbs (1.6Kg) Suggested Use: General Cytology Specimen Processing: Small to Large volume specimens



Suggested Specimens:

- * Sputum & Bronchial Washings
- * Urine
- * Pleural, Cardio, etc.
- * CFS, FNA

PRODUCT NUMBER	DESCRIPTION
30-100B	Liqui-PREP™ Cytology Processing Kit ~ 100 Processes Bulk Processing Kit. Actual processes per kit depend on the specimens being processed. Configuration: <ul style="list-style-type: none"> • 2 Bottle of Liqui-PREP™ Preservative Solution (990ml Fill) • 2 Liqui-PREP™ Cellular Base Solution (26ml Fill) • 1 Box of 100 Plastic 15ml Centrifuge Tubes Shipping Information: <ul style="list-style-type: none"> • Kit Dimension: 8" X 8" X 9" (20.3cm X 20.3cm X 22.9cm) • ~ Kit Weight: 6.9lbs (3.1Kg) Suggested Use: General Cytology Specimen Processing: Small to Large volume specimens



Suggested Specimens:

- * Sputum & Bronchial Washings
- * Urine, Pleural, Cardio, etc.
- * CFS, FNA

PRODUCT NUMBER	DESCRIPTION
30-100B1	Liqui-PREP™ Cytology Processing Kit ~ 100 Processes Bulk Processing Kit. Actual processes per kit depend on the specimens being processed. Configuration: <ul style="list-style-type: none"> • 2 Bottle of Liqui-PREP™ Preservative Solution (990ml Fill) • 2 Liqui-PREP™ Cellular Base Solution (26ml Fill) Shipping Information: <ul style="list-style-type: none"> • Kit Dimension: 6" X 6" X 10" (15.2cm X 15.2cm X 25.4cm) • ~ Kit Weight: 4lbs (1.8Kg) Suggested Use: General Cytology Specimen Processing: Small to Large volume specimens



2017 LGM INTERNATIONAL CATALOG

Liqui-PREP™ Cytology Processing Products & Accessories

Liqui-PREP™ 40-Series Cytology Processing Kits

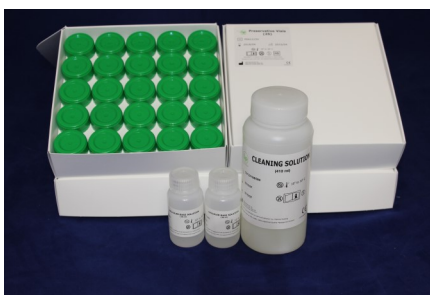
Liqui-PREP™ 40-Series of products include Liqui-PREP™ Preservative Solution in Vials and Bulk Bottles, Liqui-PREP™ Cleaning Solution and Liqui-PREP™ Cellular Base Solution. Some products include 15ml Plastic Centrifuge tubes.



Suggested Specimens:

- * Cervical Specimens
- * Buccal Specimens
- * Anal Specimens

PRODUCT NUMBER	DESCRIPTION
40-100	<p>Liqui-PREP™ Special Cytology Processing Kit ~ 100 Processes</p> <p>If using the "Working Tube" Encapsulation method or Auto-LP™, there is enough Liqui-PREP™ Cellular Base to perform ~190 processes.</p> <p>Configuration:</p> <ul style="list-style-type: none"> • 4 25 Liqui-PREP™ Preservative Vial Trays (10ml Fill) • 1 Bottle of Liqui-PREP™ Cleaning Solution (410ml Fill) • 2 Liqui-PREP™ Cellular Base Solution (38ml Fill) • 1 Box of 100 Plastic 15ml Centrifuge Tubes <p>Shipping Information:</p> <ul style="list-style-type: none"> • Kit Dimension: 14" X 8" X 8" (35.6cm X 20.3cm X 20.3cm) • ~ Kit Weight: 8.5lbs (3.9Kg) <p>Suggested Use:</p> <p>General Cytology Specimen Processing: Small volume specimens collected with or without collection devices.</p>



Suggested Specimens:

- * Cervical Specimens
- * Buccal Specimens
- * Anal Specimens

PRODUCT NUMBER	DESCRIPTION
40-1001	<p>Liqui-PREP™ Special Cytology Processing Kit ~ 100 Processes</p> <p>If using the "Working Tube" Encapsulation method or Auto-LP™, there is enough Liqui-PREP™ Cellular Base to perform ~190 processes.</p> <p>Configuration:</p> <ul style="list-style-type: none"> • 4 25 Liqui-PREP™ Preservative Vial Trays (10ml Fill) • 1 Bottle of Liqui-PREP™ Cleaning Solution (410ml Fill) • 2 Liqui-PREP™ Cellular Base Solution (38ml Fill) <p>Shipping Information:</p> <ul style="list-style-type: none"> • Kit Dimension: 11" X 8" X 8" (27.9cm X 20.3cm X 20.3cm) • ~ Kit Weight: 6.7lbs (3.0Kg) <p>Suggested Use:</p> <p>General Cytology Specimen Processing: Small volume specimens collected with or without collection devices.</p>



2017 LGM INTERNATIONAL CATALOG

Liqui-PREP™ Cytology Processing Products & Accessories

Liqui-PREP™ 40-Series Cytology Processing Kits



Suggested Specimens:

- * Cervical Specimens
- * Buccal Specimens
- * Anal Specimens

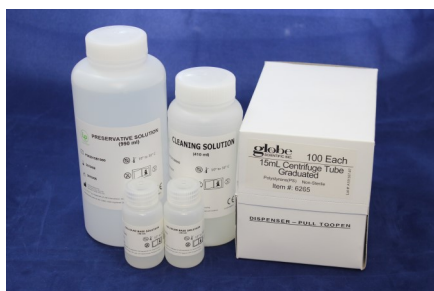
PRODUCT NUMBER	DESCRIPTION
40-300	<p>Liqui-PREP™ Special Cytology Processing Kit ~ 300 Processes</p> <p>If using the "Working Tube" Encapsulation method or Auto-LP™, there is enough Liqui-PREP™ Cellular Base to perform ~560 processes.</p> <p>Configuration:</p> <ul style="list-style-type: none"> • 12 25 Liqui-PREP™ Preservative Vial Trays (10ml Fill) • 3 Bottle of Liqui-PREP™ Cleaning Solution (410ml Fill) • 1 Liqui-PREP™ Cellular Base Solution (225ml Fill) • 3 Box of 100 Plastic 15ml Centrifuge Tubes <p>Shipping Information:</p> <ul style="list-style-type: none"> • Kit Dimension: 16" X 16" X 12" (40.6cm X 40.6cm X 30.5cm) • ~ Kit Weight: 24lbs (10.9Kg) <p>Suggested Use:</p> <p>General Cytology Specimen Processing: Small volume specimens collected with or without collection devices.</p>



Suggested Specimens:

- * Cervical Specimens
- * Buccal Specimens
- * Anal Specimens

PRODUCT NUMBER	DESCRIPTION
40-3001	<p>Liqui-PREP™ Special Cytology Processing Kit ~ 300 Processes</p> <p>If using the "Working Tube" Encapsulation method or Auto-LP™, there is enough Liqui-PREP™ Cellular Base to perform ~560 processes.</p> <p>Configuration:</p> <ul style="list-style-type: none"> • 12 25 Liqui-PREP™ Preservative Vial Trays (10ml Fill) • 3 Bottle of Liqui-PREP™ Cleaning Solution (410ml Fill) • 1 Liqui-PREP™ Cellular Base Solution (225ml Fill) <p>Shipping Information:</p> <ul style="list-style-type: none"> • Kit Dimension: 16" X 16" X 8" (40.6cm X 40.6cm X 20.3cm) • ~ Kit Weight: 20.2lbs (9.2Kg) <p>Suggested Use:</p> <p>General Cytology Specimen Processing: Small volume specimens collected with or without collection devices.</p>



Suggested Specimens:

- * Sputum & Bronchial Washings
- * Urine, Pleural, Cardio, etc.
- * CFS, FNA

PRODUCT NUMBER	DESCRIPTION
40-100B	<p>Liqui-PREP™ Special Cytology Processing Kit ~ 100 Processes</p> <p>Bulk Processing Kit. Actual processes per kit depend on the specimens being processed.</p> <p>Configuration:</p> <ul style="list-style-type: none"> • 1 Bottle of Liqui-PREP™ Preservative Solution (990ml Fill) • 1 Bottle of Liqui-PREP™ Cleaning Solution (410ml Fill) • 2 Liqui-PREP™ Cellular Base Solution (38ml Fill) • 1 Box of 100 Plastic 15ml Centrifuge Tubes <p>Shipping Information:</p> <ul style="list-style-type: none"> • Kit Dimension: 8" X 8" X 9" (20.3cm X 20.3cm X 22.9cm) • ~ Kit Weight: 5.7lbs (2.6Kg) <p>Suggested Use:</p> <p>General Cytology Specimen Processing: Small to Large volume specimens</p>



2017 LGM INTERNATIONAL CATALOG

Liqui-PREP™ Cytology Processing Products & Accessories

Liqui-PREP™ 40-Series Cytology Processing Kits



Suggested Specimens:

- * Sputum & Bronchial Washings
- * Urine, Pleural, Cardio, etc.
- * CFS, FNA

PRODUCT NUMBER	DESCRIPTION
40-100B1	<p>Liqui-PREP™ Special Cytology Processing Kit ~ 100 Processes</p> <p>Bulk Processing Kit. Actual processes per kit depend on the specimens being processed.</p> <p>Configuration:</p> <ul style="list-style-type: none"> • 1 Bottle of Liqui-PREP™ Preservative Solution (990ml Fill) • 1 Bottle of Liqui-PREP™ Cleaning Solution (410ml Fill) • 2 Liqui-PREP™ Cellular Base Solution (38ml Fill) <p>Shipping Information:</p> <ul style="list-style-type: none"> • Kit Dimension: 6" X 6" X 10" (15.2cm X 15.2cm X 25.4cm) • ~ Kit Weight: 4.1lbs (1.9Kg) <p>Suggested Use:</p> <p>General Cytology Specimen Processing: Small to Large volume specimens</p>



Suggested Specimens:

- * Sputum & Bronchial Washings
- * Urine, Pleural, Cardio, etc.
- * CFS, FNA

PRODUCT NUMBER	DESCRIPTION
40-500	<p>Liqui-PREP™ Special PLUS Processing Kit</p> <p>Bulk Processing Kit. Actual processes per kit depend on the specimens being processed.</p> <p>Configuration:</p> <ul style="list-style-type: none"> • 10 Liqui-PREP™ Preservative Vials (10ml Fill) • 1 Bottle of Liqui-PREP™ Preservative Solution (990ml Fill) • 1 Bottle of Liqui-PREP™ Lytic Reagent (480ml Fill) • 1 Bottle of Liqui-PREP™ Cleaning Solution (105ml Fill) • 1 Liqui-PREP™ Cellular Base Solution (38ml Fill) • 1 Box of 100 Plastic 15ml Centrifuge Tubes <p>Shipping Information:</p> <ul style="list-style-type: none"> * Kit Dimension: 8" X 8" X 9" (20.3cm X 20.3cm X 22.9cm) * ~ Kit Weight: 5.5lbs (2.5Kg) <p>Suggested Use:</p> <p>General Cytology Specimen Processing: Small to Large volume specimens</p>



2017 LGM INTERNATIONAL CATALOG

Liqui-PREP™ Cytology Processing Products & Accessories

Liqui-PREP™ Accessories



PRODUCT NUMBER	DESCRIPTION
60-010	Liqui-PREP™ Collection Vials - 200 Vials per case
Configuration:	<ul style="list-style-type: none"> 8 25 Liqui-PREP™ Preservative Vial Trays (10ml Fill)
Shipping Information:	<ul style="list-style-type: none"> Kit Dimension: 16" X 16" X 4" (40.6cm X 40.6cm X 10.2cm) ~ Kit Weight: 10.1lbs (4.6Kg)
Suggested Use:	General Cytology Specimen Processing: Small to Large volume specimens



PRODUCT NUMBER	DESCRIPTION
60-1000	Liqui-PREP™ Preservative Solution 1000 - 4 Bottles per case
Configuration:	<ul style="list-style-type: none"> 4 Bottles of Liqui-PREP™ Preservative Solution (990ml Fill)
Shipping Information:	<ul style="list-style-type: none"> Kit Dimension: 8" X 8" X 9" (20.3cm X 20.3cm X 22.9cm) ~ Kit Weight: 9.7lbs (4.4Kg)
Suggested Use:	General Cytology Specimen Processing: Small to Large volume specimens



PRODUCT NUMBER	DESCRIPTION
60-2000	Liqui-PREP™ Preservative Solution 2000 - 4 Bottles per case
Configuration:	<ul style="list-style-type: none"> 4 Bottles of Liqui-PREP™ Preservative Solution (1880ml Fill)
Shipping Information:	<ul style="list-style-type: none"> Kit Dimension: 10" X 10" X 10" (25.4cm X 25.4cm X 25.4cm) ~ Kit Weight: 18.2lbs (8.3Kg)
Suggested Use:	General Cytology Specimen Processing: Small to Large volume specimens



PRODUCT NUMBER	DESCRIPTION
60-4000	Liqui-PREP™ Preservative Solution 4000 - 4 Bottles per case
Configuration:	<ul style="list-style-type: none"> 4 Bottles of Liqui-PREP™ Preservative Solution (3750ml Fill)
Shipping Information:	<ul style="list-style-type: none"> * Kit Dimension: 12" X 12" X 12" (30.5cm X 30.5cm X 30.5cm) * ~ Kit Weight: 35.4lbs (16.1Kg)
Suggested Use:	General Cytology Specimen Processing: Small to Large volume specimens



2017 LGM INTERNATIONAL CATALOG

Liqui-PREP™ Cytology Processing Products & Accessories

Liqui-PREP™ Urine Cytology Kits



PRODUCT NUMBER	DESCRIPTION
35-0050	Liqui-PREP™ Urine Cup Processing Kit - 50 Processes
Configuration:	<ul style="list-style-type: none"> • 2 25 Liqui-PREP™ Urine Preservative Cup Trays (55ml Fill) • 1 Bottle of Liqui-PREP™ Cellular Base Solution (10ml Fill)
Shipping Information:	<ul style="list-style-type: none"> • Kit Dimension: 15" X 13" X 7" (38.1cm X 33.0cm X 17.8cm) • ~ Kit Weight: 10lbs (4.5Kg)
Suggested Use:	Urine Cytology Specimen Processing: Using prefilled urine cups



PRODUCT NUMBER	DESCRIPTION
35-0055	Liqui-PREP™ Urine Cup Processing Kit - 50 Processes
Configuration:	<ul style="list-style-type: none"> • 2 25 Liqui-PREP™ Urine Preservative Cup Trays (55ml Fill) • 1 Bottle of Liqui-PREP™ Cellular Base Solution (10ml Fill) • 1 Box of 100 LP Microscope Slides
Shipping Information:	<ul style="list-style-type: none"> • Kit Dimension: 15" X 13" X 7" (38.1cm X 33.0cm X 17.8cm) • ~ Kit Weight: 10lbs (4.5Kg)
Suggested Use:	Urine Cytology Specimen Processing: Using prefilled urine cups



PRODUCT NUMBER	DESCRIPTION
35-0060	Liqui-PREP™ Urine Cup Processing Kit - 50 Processes
Configuration:	<ul style="list-style-type: none"> • 2 25 Liqui-PREP™ Urine Preservative Cup Trays (55ml Fill)
Shipping Information:	<ul style="list-style-type: none"> • Kit Dimension: 15" X 13" X 7" (38.1cm X 33.0cm X 17.8cm) • ~ Kit Weight: 10lbs (4.5Kg)
Suggested Use:	Urine Cytology Specimen Processing: Using prefilled urine cups



2017 LGM INTERNATIONAL CATALOG

Liqui-PREP™ Cytology Processing Products & Accessories

Liqui-PREP™ Respiratory Cytology Kits



PRODUCT NUMBER	DESCRIPTION
35-0300	Liqui-PREP™ Bulk Urine Preservative Processing Kit
Configuration:	<ul style="list-style-type: none"> • 4 Bottles of Liqui-PREP™ Urine Preservative Solution (3750ml Fill) • 1 Bottle of Bottle of Liqui-PREP™ Cellular Base Solution (38ml Fill) • 1 Dispensing Pump
Shipping Information:	<ul style="list-style-type: none"> • Kit Dimension: 12" X 12" X 12" (30.5cm X 30.5cm X 30.5cm) • ~ Kit Weight: 38.8lbs (17.6Kg)
Suggested Use:	Urine Cytology Specimen Processing



PRODUCT NUMBER	DESCRIPTION
35-0100	Liqui-PREP™ Urine Preservative Solution 4000 - 4 Bottles per case
Configuration:	<ul style="list-style-type: none"> • 4 Bottles of Liqui-PREP™ Urine Preservative Solution (3750ml Fill)
Shipping Information:	<ul style="list-style-type: none"> • Kit Dimension: 12" X 12" X 12" (30.5cm X 30.5cm X 30.5cm) • ~ Kit Weight: 35.5lbs (16.1Kg)
Suggested Use:	Urine Cytology Specimen Processing



2017 LGM INTERNATIONAL CATALOG

Liqui-PREP™ Cytology Processing Products & Accessories

Liqui-PREP™ Respiratory Cytology Kits



PRODUCT NUMBER	DESCRIPTION
80-2050	Liqui-PREP™ Respiratory Processing Kit - 48 Processes
Configuration:	<ul style="list-style-type: none"> • 48 Liqui-PREP™ Respiratory Collection Vials (15ml Fill) • 1 Bottle of Liqui-PREP™ Cellular Base Solution (26ml Fill)
Shipping Information:	<ul style="list-style-type: none"> • Kit Dimension: 11.5" X 11.5" X 3.75" (29.1cm X 29.2cm X 9.5cm) • ~ Kit Weight: 3.8lbs (1.7Kg)
Suggested Use:	Respiratory Cytology Specimen Processing: Using prefilled Respiratory Collection cups



PRODUCT NUMBER	DESCRIPTION
80-0050	Liqui-PREP™ Respiratory Collection Vials - 50 Vials
Configuration:	<ul style="list-style-type: none"> • 50 Liqui-PREP™ Respiratory Collection Vials (15ml Fill)
Shipping Information:	<ul style="list-style-type: none"> • Kit Dimension: 11.5" X 11.5" X 3.75" (29.1cm X 29.2cm X 9.5cm) • ~ Kit Weight: 3.5lbs (1.7Kg)
Suggested Use:	Respiratory Cytology Specimen Processing: Using prefilled Respiratory Collection cups

Liqui-PREP™ Accessories



PRODUCT NUMBER	DESCRIPTION
70-300	Liqui-PREP™ Cleaning Solution PLUS T
Configuration:	<ul style="list-style-type: none"> • 3 Liqui-PREP™ Cleaning Solution (410ml Fill) • 1 Bottle of Liqui-PREP™ Cellular Base Solution (225ml Fill) • 3 Box of 100 Plastic 15ml Centrifuge Tubes
Shipping Information:	<ul style="list-style-type: none"> • Kit Dimension: 13" X 13" X 8" (33.0cm X 33.0cm X 20.3cm) • ~ Kit Weight: 9.9lbs (4.5Kg)
Suggested Use:	Urine Cytology Specimen Processing: Using prefilled urine cups



2017 LGM INTERNATIONAL CATALOG

Liqui-PREP™ Cytology Processing Products & Accessories

Liqui-PREP™ Accessories



PRODUCT NUMBER	DESCRIPTION
70-3001	Liqui-PREP™ Cleaning Solution PLUS
Configuration:	<ul style="list-style-type: none"> • 3 Liqui-PREP™ Cleaning Solution (410ml Fill) • 1 Bottle of Liqui-PREP™ Cellular Base Solution (225ml Fill)
Shipping Information:	<ul style="list-style-type: none"> • Kit Dimension: 8" X 8" X 8" (20.3cm X 20.3cm X 20.3cm) • ~ Kit Weight: 4.4lbs (2.0Kg)
Suggested Use:	Urine Cytology Specimen Processing



PRODUCT NUMBER	DESCRIPTION
70-500	Liqui-PREP™ Cleaning Solution – 500
Configuration:	<ul style="list-style-type: none"> • 6 Liqui-PREP™ Cleaning Solution (410ml Fill)
Shipping Information:	<ul style="list-style-type: none"> • Kit Dimension: 9" X 9" X 7" (22.9cm X 17.8cm X 17.8cm) • ~ Kit Weight: 7.1lbs (3.2Kg)
Suggested Use:	Urine Cytology Specimen Processing

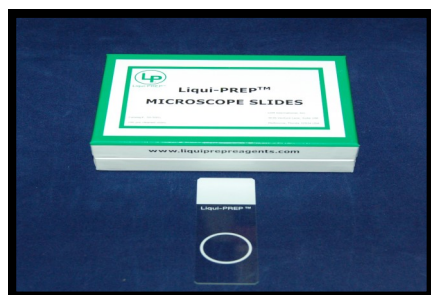


PRODUCT NUMBER	DESCRIPTION
80-1000	Liqui-PREP™ Lytic Reagent - 1000
Configuration:	<ul style="list-style-type: none"> • 4 Bottles of Liqui-PREP™ Lytic Reagent (990ml Fill)
Shipping Information:	<ul style="list-style-type: none"> • Kit Dimension: 8" X 8" X 9" (20.3cm X 20.3cm X 22.9cm) • ~ Kit Weight: 10lbs (4.5Kg)
Suggested Use:	General Cytology Specimen Processing: Small to Large volume specimens



2017 LGM INTERNATIONAL CATALOG

Liqui-PREP™ Accessories

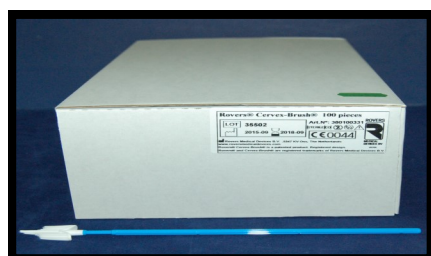


PRODUCT NUMBER	DESCRIPTION
50-5001	Liqui-PREP™ Microscope Slides
Configuration:	<ul style="list-style-type: none"> Box of 100 glass microscope slides with inoculation circle and logo
Shipping Information:	<ul style="list-style-type: none"> Box Dimension: 4.5" X 3.2" X 1.2" (11.5cm X 8cm X 3cm) ~ Kit Weight: 0.25lbs (0.5Kg)

Collection Devices Distributed by LGM International, Inc.



PRODUCT NUMBER	DESCRIPTION
380-100-311	Rovers Cervex Brush - Non-Sterile
Configuration:	<ul style="list-style-type: none"> Case of 1,000 non-sterile brushes - 20 bags; 50 brushes per bag
Shipping Information:	<ul style="list-style-type: none"> Case Dimension: 11.8" X 8.3" X 8.3" (30cm X 21cm X 21cm) ~ Kit Weight: 5.2lbs (2.4Kg)



PRODUCT NUMBER	DESCRIPTION
380-100-331	Rovers Cervex Brush - Sterile
Configuration:	<ul style="list-style-type: none"> Box of 100 individually wrapped cervex brushes per box
Shipping Information:	<ul style="list-style-type: none"> Case Dimension: 12.2" X 6.7" X 4.1" (31cm X 17cm X 10.5cm) ~ Kit Weight: 1.1lbs (0.495Kg)



PRODUCT NUMBER	DESCRIPTION
90-500	Wallach Papette Cervical Brush - Non-Sterile
Configuration:	<ul style="list-style-type: none"> Case of 500 non-sterile brushes in bags of 100 brushes per bag
Shipping Information:	<ul style="list-style-type: none"> Case Dimension: 12.2" X 6.7" X 4.1" (31cm X 17cm X 10.5cm) ~ Kit Weight: 1.1lbs (0.495Kg)

Product Number

Rovers COMBI Cervex Brush Product Description

380-101-000 Rovers COMBI Cervex Brush NON-STERILE (500 Brushes per Case; packaged in bags of 100)

380-101-000 Rovers COMBI Cervex Brush STERILE (100 Brushes per Box; individually wrapped)



2017 LGM INTERNATIONAL CATALOG

Auto-LP™ Walk Away Instrumentation



LGM International, Inc. announces the **Auto-LP™ General Cytology Processing Instrument**. This is perhaps the first medium volume, reasonably priced “Walk Away” instrument for the general Cytology Laboratory.

The video of the **Auto-LP™** running can be found on the LGM International website www.liquipreagents.com or you can view the video on YouTube at the link as follows:

The YouTube Link is: <http://youtu.be/BRQY7XCkOWY>

Specimen Processing:

1. Pour or aliquot the specimen into a 15ml Centrifuge Tube.
2. Centrifuge the specimen for ~ 5 to 10 minutes at ~ 500xg to 600xg.
3. While the Centrifuge is running, label and populate the **Auto-LP™ Specimen Processing Rack/s**, label microscope slides and place them on the **Auto-LP™ Microscope Slide Tray**.
4. When the Centrifuge stops, take the specimens directly from the centrifuge and place them into the **Auto-LP™ Specimen Processing Rack/s**.
5. Set up the Auto-LP™:
 - a. Open the doors to the Auto-LP™ and position the Auto-LP™ Sample Processing Rack into the Auto-LP™.
 - b. Place a bottle of Liqui-PREP™ Cellular Base Solution into its position in the Auto-LP™.
 - c. Place the Auto-LP™ Microscope Slide Tray on the Heated Microscope Slide Rack in the Auto-LP™.
 - d. Close the doors for the Auto-LP™ for Processing.
6. **Running the Auto-LP™:**
 - a. Computer Touch Screen: Enter the number of specimens to be processed.
 - b. Computer Touch Screen: Press the “RUN PROGRAM” button. The Auto-LP™ analyzes the cellular pellets, standardize the specimen, dilute and encapsulate a representative aliquot of the standardized specimen and make a slide.



2017 LGM INTERNATIONAL CATALOG

Auto-LP™ Instrument



PRODUCT NUMBER

DESCRIPTION

AMOUNT

50-0020

Auto-LP™ Instrument

1 unit

Includes:

50-0010 Auto-LP™ Specimen Processing Rack (each)	2 Racks
50-0015 Auto-LP™ Microscope Slide Tray (each)	2 Trays
50-0017 Used Pipette Tip Containers (2 per Set)	1 Set
50-5001 Liqui-PREP™ Microscope Slides (Box of 100 Slides)	2 Boxes
RB4013 125ml Bottles with Caps (25 Bottles per Bag)	2 Bottles
50-0016 5ml Plastic Pipette Tips (1,000 Tips per case)	1 Case
GCT-100 Globe 15ml Plastic Centrifuge Tubes (100 Tubes per Box)	2 Boxes

Auto-LP™ Additional Accessories List

Product Number

Product Description

50-0017	Used Pipette Tip Container (2 per package)
50-0016	5ml Pipette Tips (1000 tips per box; Specific for Auto-LP™)
50-0018	125ml Plastic Bottle (25 bottles per Bag; Specific for Auto-LP™)
GCT-100	Globe 15ml Centrifuge tubes (100 tubes per box; Specific for Auto-LP™)



2017 LGM INTERNATIONAL CATALOG

Auto-LP™ Accessories



Auto-LP™ Specimen Processing

PRODUCT NUMBER	DESCRIPTION
50-0010	Auto-LP™ Specimen Processing Rack
Configuration:	<ul style="list-style-type: none"> • 1 rack per box
Shipping Information:	<ul style="list-style-type: none"> • Box Dimension: 15.4" X 7.9" X 5.9" (39cm X 20cm X 15cm) • ~ Kit Weight: 4.3lbs (2.0Kg)

This is a precision manufactured rack which allows processing of up to 12 specimens per rack.



Auto-LP™ Microscope Slide Tray

PRODUCT NUMBER	DESCRIPTION
50-0015	Auto-LP™ Microscope Slide Tray
Configuration:	<ul style="list-style-type: none"> • 1 Tray per box
Shipping Information:	<ul style="list-style-type: none"> • Box Dimension: 15.4" X 7.9" X 5.9" (39cm X 20cm X 15cm) • ~ Kit Weight: 4.3lbs (2.0Kg)

This is a precision, special tray that evenly conducts low heat to the microscope slides for rapid drying. Each Auto-LP™ Microscope Slide Tray holds a maximum of 12 slides.

LGM International, Inc.
3030 Venture Lane, Suite 106
Melbourne, Florida 32934 U.S.A.
Telephone: (321) 254-0480
Fax: (321) 254-0481

Website: www.liquipreagents.com
Ordering Email: orders@liquipreagents.com
Sales Email: sales@liquipreagents.com
Technical Support: technical@liquipreagents.com



EU Representative:

Wellkang Ltd.

Suite B, 29 Harley Street
London W1G 9QR, England, UK
Tel: +44 (20) 30869438 & 32876300
Fax: +44 (20) 76811874
Web: www.CE-marking.eu
Email: AuthRep@CE-marking.eu

